





# Space and FF&E Standards

The following standards have been developed to establish minimum levels of design performance desired for MiraCosta College renovations and new building projects. These standards focus in the building interior spaces and describe the desired character and qualities for common program spaces at MiraCosta College. The standards cover a range of basic design items and issues however, not all items are addressed. It is the designer's responsibility to provide design solutions that are consistent with the reference standards established by the College as well as standards of care in good building design practices.

MiraCosta College has developed additional documents that shall be referenced. These documents include:

## Design Criteria:

### Natural Daylighting

Natural daylighting has a positive effect on learning and is credited for contributing to higher test scores, increased daily attendance, and higher teacher satisfaction and retention. Properly designed and implemented daylighting strategies can save energy. Good daylight penetration into the building combined with shading and reflected light options will help provide pleasant environments.

### Sustainable Design

MiraCosta College has developed District Sustainability Design Guidelines. Please refer to these guidelines in order to understand District established minimums and desired levels of sustainable design.

### Codes & Standards

Design and construction codes and standards are listed below. The codes and standards listed are minimum requirements. Nothing is to prevent the architect, engineer, or consultant from exceeding the applicable requirements. In most cases the current editions of codes and referenced standards apply.

Applicable Codes include but are not limited to:

» Building	California Building Code
» Mechanical	California Mechanical Code
» Plumbing	California Plumbing Code
» Electrical	California Electrical Code
» Energy	California Energy Code
» Fire	California Fire Code
» Life Safety	California Building Code
» Accessibility	California Building Code
» Ventilation / Indoor air quality	California Energy Code
» Sustainability	California Green Building Code
» Elevator	Elevator Safety Orders

### References and Guidelines

- » Americans with Disabilities Act (ADA)
- » National Fire Protection Association, NFPA 110: Life Safety Code.

### Background Noise Criteria

The background noise criterion is a measure of the noise that should not be exceeded by mechanical, electrical, plumbing and other noise sources in a space in order to achieve acceptable sound levels for various space uses. The Noise Criterion (NC) curves are used to describe acceptable noise environments for a variety of functional areas. The standard family of NC curves has been in use for years and may be found in the "Sound and Vibration Control" chapter of the HVAC Applications Handbook published by the American Society of Heating, Refrigerating and Air Conditioning Engineers (ASHRAE). The target background noise criteria listed below. Special attention must be paid to rooms adjacent building equipment rooms.

### Area Noise Criterion

### Interaction

All campus design should encourage social interaction. This requires that a variety of active and passive spaces be created in public areas of the building, as well as the exterior areas surrounding the building. These areas for informal interaction shall be linked to the circulation schemes. Concepts should be developed as part of the design process that would directly support these objectives.

#### INFORMAL INTERACTION CONSIDERATIONS

- » Casual study/interaction spaces for short duration interaction (interior and exterior).
- » Outdoor gathering spaces should be highly visible and inviting.
- » Varying the sizes of gathering spaces allows for small, medium, or large groups to gather.
- » Display/announcement boards serve as gathering places for informal contact.
- » Connections to other campus facilities will facilitate interaction with students and staff

## Design Criteria:

### Signage

Signage shall be provided at the interiors and exteriors of all spaces as required by building codes and guidelines. The MiraCosta College Design and Construction Standards shall be referenced for specific Signage design information.

### Safety

The building interior functions shall promote the safe operation of the building and the health and comfort of the occupants.

All design shall be based on regulatory requirements and guidelines along with good engineering practices. Code requirements are a minimum standard.

### Furniture

The information included herein describes the minimum requirements for furniture and equipment for the common program spaces at MiraCosta College. Each space type includes a list of design characteristics along with a space diagram illustrating a generic room layout. The furniture shown is considered to be the minimum prescribed for the room function. The included diagrams and data sheets reference the MiraCosta Design and Construction Standards for additional information.

MiraCosta College has developed a list of furniture vendors that have established relationships with the District. These are considered the preferred vendors for furniture at the College:

- » Agati | <http://www.agati.com/>
- » Arenson | <http://www.arensonof.com/>
- » KI | <https://www.ki.com/>
- » Omni Pacific | <http://www.omnipacific.com/>
- » Parron Hall | <http://www.parronhall.com/>
- » Virco | <http://virco.com/>





## Room Diagrams

- 1.0 Private Offices
- 2.0 Shared Offices
- 3.0 Meeting Rooms
- 4.0 Classrooms
- 5.0 Public Spaces
- 6.0 Ancillary Spaces

## 1.01 FACULTY & STAFF OFFICE

**ASF:** 100

**STATIONS:** 1

### USE

Activities: I gpgtcn"q eg"y qtm"

Access: Hcewnv{" ("Uvc

Frequency/Hours: Mon. - Fri. 7:00am - 5:00pm

### CHARACTERISTICS

Ceiling Height: 9'-0" minimum, 10'-0" preferred

Ceiling Treatment: Acoustical Ceiling Tiles

Floor Finish: Carpet

Wall Finish: Painted Gypsum Board

Acoustics: Uqwpf"Vtcpu o kuukqp"Eqpvtqn"tgswtgf"cv"y cnu"cpf"egknkpi"

Natural Lighting: Preferred

Light Control: Sunshades per Design and Construction Standards

Ecugy qtm< N/A

Accessories: Ukfgnki jv"kpq'gcej"q eg-"Eqcv"jqpmu

Jctf yctg< Per Design and Construction Standards

### TECHNOLOGY

Audio/Visual: N/A

Pgy y qtm< Yktgngu="Fcv"rqtvu"ujqyp"kp"fk i tc o "ctg" o lpk o w o "tgswtgf=" Refer to Technology Guidelines for additional information

Communications:



## 1.02 DEAN / DIRECTOR OFFICE

ASF: 160  
STATIONS: 1

---

USE

---

---

---

## 1.02 DEAN / DIRECTOR OFFICE



|



## 1.0 PRIVATE OFFICES

### 1.04 PRESIDENT'S OFFICE

ASF:	285
STATIONS:	1

#### USE

Activities:	I gpgtcn"q eg"y qtm"
Access:	Rtgukfgpv" ( "Uvc
Frequency/Hours:	Mon. - Fri. 7:00am - 5:00pm

#### CHARACTERISTICS

Ceiling Height:	9'-0" minimum, 10'-0" preferred
Ceiling Treatment:	Acoustical Ceiling Tiles
Floor Finish:	Carpet
Wall Finish:	Painted Gypsum Board
Acoustics:	Uqwpf"Vtcpu o kuukqp"Eqpvtqn"tgswktgf"cv"y cnu"cpf"egknkp i"
Natural Lighting:	Preferred
Light Control:	Sunshades per Design and Construction Standards
Ecug y qtm<	N/A
Accessories:	Ukfgnki jv"kpq'gcej"q eg-"Eqcv"jqqu-"Octmgtdqctf"
Jctf yctg<	Per Design and Construction Standards

#### TECHNOLOGY

Audio/Visual:	Ycnn"o qwpvgf"Hncv"rcpgn"VX-"Tghgt"vq"Vge j pqnq i { " I wkfgnkpgu" for additional information
Pgy y qtm<	Yktnguu="Fcv"rqtvu"ujqyp"kp"fk i tc o"ctg"okp o w o"tgswktgf=" Refer to Technology Guidelines for additional information
Communications:	VOIP Phone / Data

#### MECHANICAL, ELECTRICAL & PLUMBING

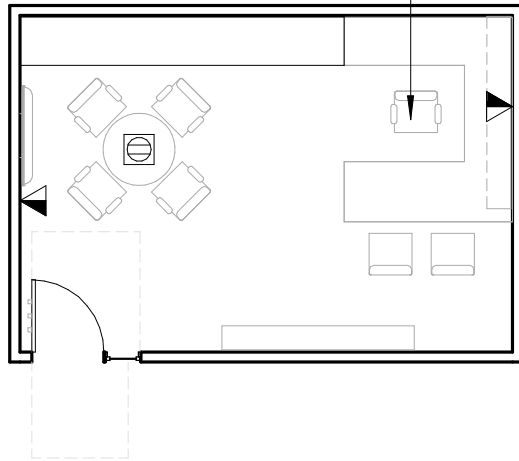
Ventilation:	Heating and cooling
CtvkŁekcn"Nki jvkpi<	Qxgtjgcf"Nki jvkpi"rgt"fgukip"cpf"Eqpuvtwevkqp"Uvcpfctfu=" Vcum"nki jvkpi"cv"y qtmuvckqp"
Electrical:	Okpko w o"*3+"Rqygt"qwwngv"cv"gcej"ycnn"
Plumbing:	N/A

#### EQUIPMENT & FURNISHINGS

See room diagram



## 1.04 PRESIDENT'S OFFICE







## 2.0 SHARED OFFICES

### 2.02 SHARED STAFF OFFICE

ASF:	120
STATIONS:	2

#### USE

Activities:	I gpgtcn"q eg"y qtm"
Access:	Uvc
Frequency/Hours:	Mon. - Fri. 7:00am - 5:00pm

#### CHARACTERISTICS

Ceiling Height:	9'-0" minimum, 10'-0" preferred
Ceiling Treatment:	Acoustical Ceiling Tiles
Floor Finish:	Carpet
Wall Finish:	Painted Gypsum Board
Acoustics:	Uqwpf"Vtcpu o kuukqp"Eqpvtqn"tgs wktgf"cv" y cnu"cpf"egknkpi"
Natural Lighting:	Preferred
Light Control:	Sunshades per Design and Construction Standards
Ecug y qtm<	N/A
Accessories:	Ukfgnki jv"kpq'gcej"q eg-"Eqcv"jqqu-"Octmgtdqctf
Jctf yctg<	Per Design and Construction Standards

#### TECHNOLOGY

Audio/Visual:	N/A
Pgy y qtm<	Yktgnuu="Fcv"rqtvu"ujqyp"kp"fk itc o "ctg" o lpk o w o "tgs wktgf=" Refer to Technology Guidelines for additional information
Communications:	VOIP Phone / Data

#### MECHANICAL, ELECTRICAL & PLUMBING

Ventilation:	Heating and cooling
CtwkŁekci"Nki jvkpi<	Qxgtjgcf"Nki jvkpi"rgt"fgukip"cpf"Eqpvtwekqp"Uvcpfctfu=" Vcum"nki jvkpi"cv"y qtmuvckqp"
Electrical:	Okpk o w o "*3+"Rqygt"qwwngv"cv"gcej"y cm"
Plumbing:	N/A

#### EQUIPMENT & FURNISHINGS

 See room diagram

## 2.02 SHARED STAFF OFFICE

## 3.0 MEETING ROOMS

### 3.01 SMALL MEETING ROOM

<b>ASF:</b>	<b>90</b>
<b>SEATS:</b>	<b>4</b>

#### USE

Activities:	Small meetings
Access:	Uvc " ("Uvwfgpvu
Frequency/Hours:	Mon. - Sun. 7:00am - 10:00pm

#### CHARACTERISTICS

Ceiling Height:	9'-0" minimum, 10'-0" preferred
Ceiling Treatment:	Acoustical Ceiling Tiles
Floor Finish:	Carpet
Wall Finish:	Painted Gypsum Board
Acoustics:	Uqwpf"Vtcpu o kuukqp"Eqpvtqn"tgswktgf"cv" y cnu"cpf"egknp i "
Natural Lighting:	Preferred
Light Control:	Sunshades per Design and Construction Standards
Ecug y qtm<	N/A
Accessories:	Ukfgnki j v"kpq'gcej"tqq o="Octmgtdqctf="Vgng r j qpg"pgct"fqqt
Jctf yctg<	Per Design and Construction Standards

#### TECHNOLOGY

Audio/Visual:	Ycm" o qwpvgf"Hncv"rcpgn"VX="Tghgt"vq"Vge j p q n q i { " I wkfgnkpgu" for additional information
Pgy y qtm<	Yktnguu="Fvc"rqtvu"ujqyp"kp"fk i tc o"ctg" okp o w o "tgswktgf=" Refer to Technology Guidelines for additional information
Communications:	VOIP Phone / Data

#### MECHANICAL, ELECTRICAL & PLUMBING

Ventilation:	Heating and cooling
CtvkŁekca"Nki j v k p i <	Overhead Lighting per Design and Construction Standards
Electrical:	Okp k o w o "*"3+"Rq y gt"qwwngv"cv"gcej" y cm"
Plumbing:	N/A

#### EQUIPMENT & FURNISHINGS

 See room diagram



### 3.02 SMALL CONFERENCE ROOM

**ASF:** 200  
**SEATS:** 8

#### USE

Activities:	Oggvki u="Rtgugpvcvkpu="Xkfgq"Eqphgtgpeki"
Access:	Uvc " ("Uwfgpvu
Frequency/Hours:	Mon. - Sun. 7:00am - 10:00pm

#### CHARACTERISTICS

Ceiling Height:	9'-0" minimum, 10'-0" preferred
Ceiling Treatment:	Acoustical Ceiling Tiles
Floor Finish:	Carpet
Wall Finish:	Painted Gypsum Board
Acoustics:	Uqwpf"Vtcpu o kuukqp"Eqpvtqn"tgswtgf"cv" y cnu"cpf"egkkipi"
Light Control:	Uwpujcfgu"rgt"fgukip"cpf"Eqpuvtwevkqp"Uvcpcfctfu="Fctmgpkpi" Shades
Natural Lighting:	Preferred
Ecugyqtm<	Dcug"Ecdkpgv"hqt"CX"tcemu"cpf"Uvqtcig"
Accessories:	Ukfgnkijv"kpq'gcej"tqq o="Octmgtdqctf="Vgngrjqpg"pgct"fqqt
Jctfyctg<	Per Design and Construction Standards

#### TECHNOLOGY

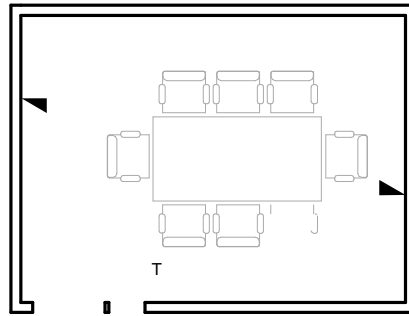
Audio/Visual:	Ycm" o qwpvgf"Hncv"rcpgn"VX="Xkfgq"Eqphgtgpeki "ecrdknkvku=" Refer to Technology Guidelines for additional information
Pgyyqtm<	Yktnguu="Fcv"rqtvu"ujqyp"kp"fkictc o"ctg"okp owo"tgswtgf=" Refer to Technology Guidelines for additional information
Communications:	VOIP Phone / Data

#### MECHANICAL, ELECTRICAL & PLUMBING

Ventilation:	Heating and cooling
CtvkLekci"Nkijvki<	



## 3.02 SMALL CONFERENCE ROOM



### 3.03 MEDIUM CONFERENCE ROOM

**ASF:** 300

**SEATS:** 12

#### USE

Activities: Oggvki u="Rtugpvcvkpu="Xlfgq"Eqphgtgpeki""

Access: Uvc

Frequency/Hours: Mon. - Sun. 7:00am - 10:00pm

#### CHARACTERISTICS

Ceiling Height: 9'-0" minimum, 10'-0" preferred

Ceiling Grid: 24" x 24" Grid

Lighting: 4' x 4' Recessed Fluorescent

Acoustics: Acoustic Tiles

Sound: 1" x 1" Acoustic Panels

Temperature: 72°F - 74°F

Humidity: 40% - 60%

Fire: Fire Extinguishers

Security: Access Control

Other: None

Notes: None

Revisions: None

Comments: None

Drawings: None

Specifications: None

Materials: None

Finishes: None

Hardware: None

Electrical: None

Mechanical: None

Plumbing: None

Fire Protection: None

Security: None

Other: None

Notes: None

Revisions: None

Comments: None

Drawings: None

Specifications: None

Materials: None

Finishes: None

Hardware: None

Electrical: None

Mechanical: None

Plumbing: None

Fire Protection: None

Security: None

Other: None

Notes: None

Revisions: None

Comments: None

Drawings: None

Specifications: None

Materials: None



## 3.0 MEETING ROOMS

### 3.04 LARGE CONFERENCE ROOM

ASF: 400

SEATS: 16

#### USE

Activities: Oggvkiu="Rtgugpvcvqpu="Xkfgq"Eqphgtgpeki"

Access: Uvc " ("Uwfgpvu"

Frequency/Hours: Mon. - Sun. 7:00am - 10:00pm

#### CHARACTERISTICS

Ceiling Height: 9'-0" minimum, 10'-0" preferred

Ceiling Treatment: Acoustical Ceiling Tiles

Floor Finish: Carpet

Wall Finish: Painted Gypsum Board

Acoustics: Uqwpf"Vtcpu o kuukq"Eqpvtq"tgswtgf"cv"ycnu"cpf"egknki"

Natural Lighting: Preferred

Light Control: Uwpucfgu"rgt"fgukip"cpf"Eqpuvtwekq"Uvcfctfu="Fctmgkpi"  
Shades

Ecuyqtm< Dcug"ecdkgv"ht"CX"tcm"cpf"Uvqtcig"

Accessories: Ukfgnki jv"kpq"gej"tqq o="Octmgtdqctf="Vgngr jppg"pgct"fqqt"

Jctfyctg< Per Design and Construction Standards

#### TECHNOLOGY

Audio/Visual: Egknki" o qwpvgf"Rtqlgevqt="Egknki" o qwpvgf"Oqvtk|gf"  
Rtqlgevq"Uetggp="Xkfgq"Eqphgtgpeg"ecrcdkkvkgu="Tghgt"vq"  
Technology Guidelines for additional information

Pgyyqtm< Yktnguu="Fvc"rqtvu"ujqyp"kp"fkictc o "ctg" o kpo w o "tgswtgf=""  
Refer to Technology Guidelines for additional information

Communications: VOIP Phone / Data

#### MECHANICAL, ELECTRICAL & PLUMBING

Ventilation: Heating and cooling

CtvkLekcn"Nki jvkpi< Overhead Lighting per Design and Construction Standards

Electrical: Okpo w o "\*3+"Rqygt"qwnvgv"cv"gej"ycm"

Plumbing: N/A

#### EQUIPMENT & FURNISHINGS See room diagram



## 3.0 MEETING ROOMS

### 3.05 EXTRA-LARGE CONFERENCE ROOM

**ASF:** 600

**SEATS:** 24

#### USE

Activities: Oggvki u="Rtgugpvcvqpu="Xkfgq"Eqphgtgpeki"

Access: Uvc " ("Uwfgpvu

Frequency/Hours: Mon. - Sun. 7:00am - 10:00pm

#### CHARACTERISTICS

Ceiling Height: 9'-0" minimum, 10'-0" preferred

Ceiling Treatment: Acoustical Ceiling Tiles

Floor Finish: Carpet

Wall Finish: Painted Gypsum Board

Acoustics: Uqwpf"Vtcpu o kuukqp"Eqpvtqn"tgswtgf"cv" y cnu"cpf"egknki"

Natural Lighting: Preferred

Light Control: Uwpujc fgu"rgt" Fguki p"cpf"Eqpuvtwekqp"Uvcpfctfu="Fctmgpkpi"  
Shades

Ecugy qtm< Etgfgp|c"l"CX"Gswkr o gpi"uvqtcig"

Accessories: Ukfgnki jv"kpqv"gej"tqq o="Octmgtdqctfu="Vgngr j qpg"pgct"fqqt

Jctfyctg< Per Design and Construction standards

#### TECHNOLOGY

Audio/Visual: Egknki" o qwpvgf"Rtqlgevqt="Egknki" o qwpvgf"Oqvqtk|gf"  
Rtqlgevqkq"Uetggp="Xkfgq"Eqphgtgpeg"ecrcdkkvkgu="Tghgt"vq"  
Technology Guidelines for additional information

Pgyv qtm< Yktnguu="Fvc"rqtvu"ujqyp"kp"fkictc o"ctg"okp owo"tgswtgkf="Refer to Technology Guidelines for additional information

Communications: VOIP Phone / Data

#### MECHANICAL, ELECTRICAL & PLUMBING

Ventilation: Heating and cooling

CtvkLekci"Nki jvkpi< Overhead Lighting per Design and Construction Standards

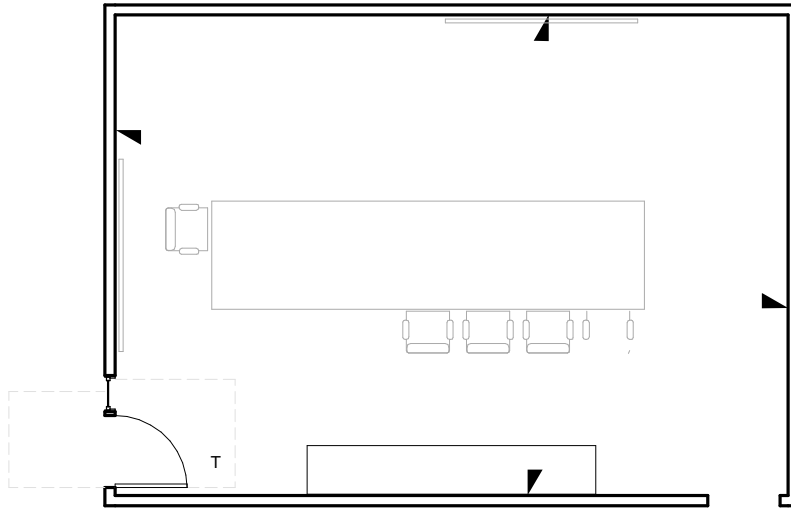
Electrical: Okpko wo"\*3+"Rqygt"qwnvgv"cv"gej"ycm"

Plumbing: N/A

#### EQUIPMENT & FURNISHINGS

See room diagram

### 3.05 EXTRA-LARGE CONFERENCE ROOM



## 4.01 CLASSROOM WITH TABLET ARM CHAIRS

**ASF:** 780

**SEATS:** 40

### USE

Activities: Ngevtgu="Ngctkpi="Rtgugpvcvkqpu"

Access: Students & Faculty

Frequency/Hours: Mon. - Sun. 7:00am - 10:00pm

### CHARACTERISTICS

Ceiling Height: 9'-0" minimum, 10'-0" preferred

Ceiling Treatment: Acoustical Ceiling Tiles

Floor Finish: Carpet

Wall Finish:

---

---

---

---

---

---

---

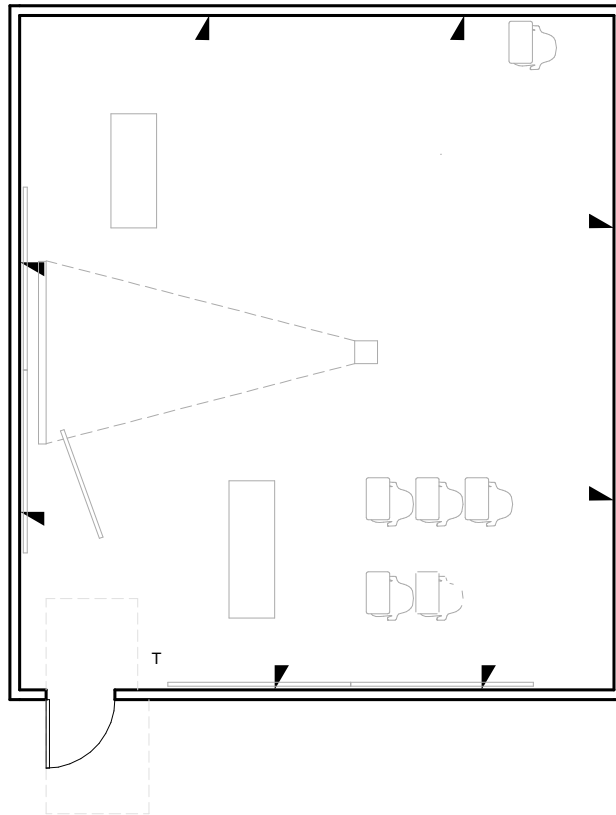
---

---

---



## 4.01 CLASSROOM WITH TABLET ARM CHAIRS



## 4.0 CLASSROOMS

### 4.02 CLASSROOM WITH TABLES AND CHAIRS

ASF: 1,000

SEATS: 40

#### USE

Activities: Ngevtgu="Ngctkpi="Rtgugpvcvkqpu"

Access: Students & Faculty

Frequency/Hours: Mon. - Sun. 7:00am - 10:00pm

#### CHARACTERISTICS

Ceiling Height: 9'-0" minimum, 10'-0" preferred

Ceiling Treatment: Acoustical Ceiling Tiles

Floor Finish: Carpet

Wall Finish: Painted Gypsum Board

Acoustics: Uqwpf"Vtcpu o kuukqp"Eqpvtqn"tgswtgf"cv" y cnu"cpf"egknp i "

Natural Lighting: Required

Light Control: Uwpujc fgu"rgt" Fguki p"cpf"Eqpuvtwekqp"Uvcpfctfu="Fctmgpkpi"  
Shades

Ecug y qtm< N/A

Accessories: Xkukqp"nk i j"v"cv"fqqt="Octmgtdqctfu="Vgngr j qpg"pgct"fqqt

Jctf yctg< Per Design and Construction Standards

#### TECHNOLOGY

Audio/Visual: Egknp i" o qwpvgf"Rtqlgevqt="Egknp i" o qwpvgf"Oqvtk|gf"  
Rtqlgevqkq"Uetggp="Tghgt"vq"Vgej pqqi { " I wkfgnkpgu"hqt"  
additional information

Pgvy qtm< Yktnguu="Fvc"rqtvu"ujqyp"kp"fk i tc o"ctg" o kpk o w o"tgswtgf="  
Refer to Technology Guidelines for additional information

Communications: VOIP Phone / Data

#### MECHANICAL, ELECTRICAL & PLUMBING

Ventilation: Heating and cooling

CtvkŁekci"Nki jvkpi< Overhead Lighting per Design and Construction Standards

Electrical: Okpk o w o"\*4+"Rq y gt"qwwngvu"rgt"gej" y cnn"

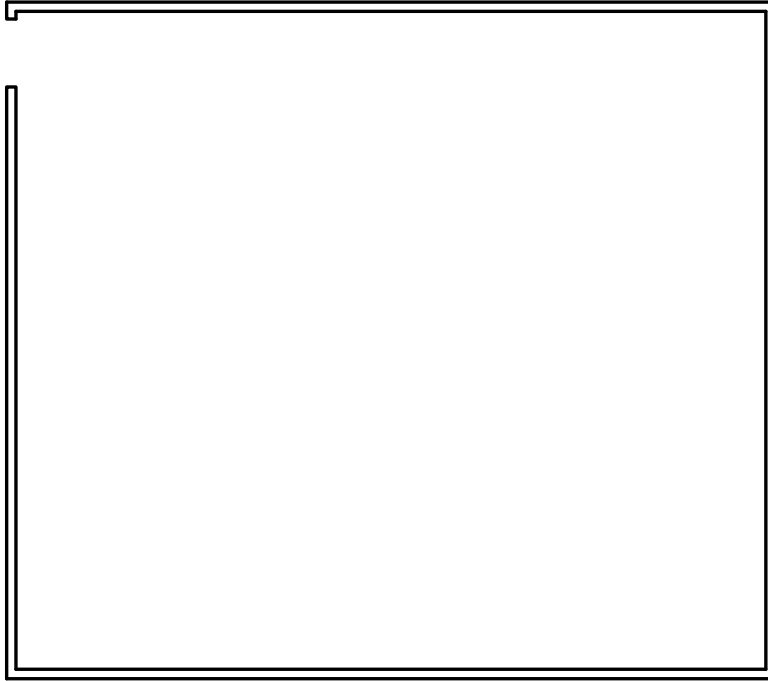
Plumbing: N/A

#### EQUIPMENT & FURNISHINGS

See room diagram

## 4.02 CLASSROOM WITH TABLES AND CHAIRS

### OPTION "A": TEACHER CONTROLS CLUSTER



## 5.0 PUBLIC SPACES

### 5.01 LOUNGE

**ASF:** 300  
**SEATS:** 15-20

#### USE

**Activities:** Uvwf {"=Uqekcn"  
**Access:** Students  
**Frequency/Hours:** Mon. - Sun. 7:00am - 10:00pm

#### CHARACTERISTICS

**Ceiling Height:** 9'-0" minimum, 10'-0" preferred  
**Ceiling Treatment:** Acoustical Ceiling Tiles  
**Floor Finish:** Resilient  
**Wall Finish:** Painted Gypsum Board  
**Acoustics:** Uqwpf"fc o rgpk i "tgswtgf"cv"y cnu"cpf"egknkpi"  
**Natural Lighting:** Required  
**Light Control:** Sunshades per Design and Construction Standards  
**Ecug y qtm<** N/A  
**Accessories:** Octmgtdqctfu"  
**Jctf yctg<** Per Design and Construction Standards

#### TECHNOLOGY

**Audio/Visual:** N/A  
**Pgy y qtm<** Yktgngu="Fcv"rqtvu"ujqyp"kp"fk i tc o "ctg" o lpk o w o "tgswtgf=" Refer to Technology Guidelines for additional information  
**Communications:** N/A

#### MECHANICAL, ELECTRICAL & PLUMBING

**Ventilation:** Heating and cooling  
**CtvkLekci"Nki jvkpi<** Overhead Lighting per Design and Construction Standards  
**Electrical:** Okpk o w o "\*5"Rqy gt"qwwngvu"cv"gcej" y cnn"  
**Plumbing:** N/A

#### EQUIPMENT & FURNISHINGS See room diagram



## 5.02 RECEPTION / WAITING

**ASF:** 240  
**SEATS:** 8-10

### USE

---

Activities:	Receiving Visitors
Access:	Uvwfgpvu" ("Uvc
Frequency/Hours:	Mon. - Fri. 7:00am - 5:00pm

---

---

---

---

---

---

---

---

---

---

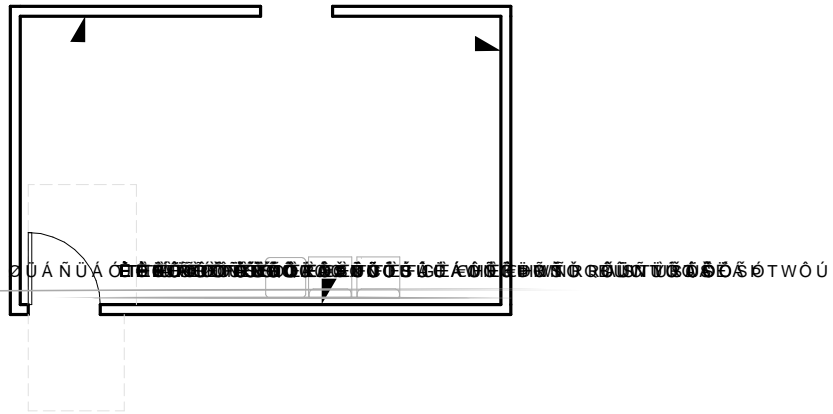
---

---

---

---

## 5.02 RECEPTION / WAITING



## 5.03 BREAK ROOM (STAFF / FACULTY)

**ASF:** 168

**SEATS:** 4-6

### USE

Activities:	U o cm" o ggvpki u="Uqekcn"
Access:	Uvc " ("Hcewnv {" "
Frequency/Hours:	Mon. - Fri. 7:00am - 5:00pm

### CHARACTERISTICS

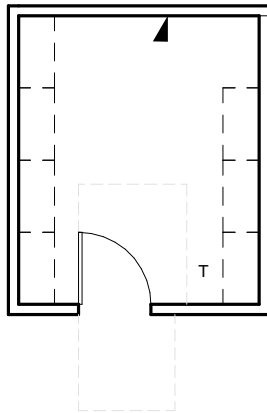
Ceiling Height:	9'-0" minimum, 10'-0" preferred
Ceiling Treatment:	Acoustical Ceiling Tiles
Floor Finish:	Resilient
Wall Finish:	Painted Gypsum Board
Acoustics:	Uqwpf"Vtcpu o kuukqp"Eqpvtqn"tgs wktgf"cv" y cnu"cpf"egkpkp i "
Natural Lighting:	Preferred
Light Control:	Sunshades per Design and Construction Standards
Ecug y qtm<	Base and upper cabinets for Storage
Accessories:	Hwnn"Uky y v





|

## 6.01 STORAGE ROOM



## 6.0 ANCILLARY SPACES

### 6.02 WORKROOM

	<b>ASF:</b>	<b>200</b>
	<b>CAPACITY:</b>	<b>N/A</b>
<b>USE</b>	Activities:	Uvqtc i g="Rtq fwevkqp"
	Access:	Uvc " ( "Hcewnv{
	Frequency/Hours:	Mon. - Fri. 7:00am - 5:00pm
<b>CHARACTERISTICS</b>	Ceiling Height:	9'-0" minimum, 10'-0" preferred
	Ceiling Treatment:	Acoustical Ceiling Tiles
	Floor Finish:	Resilient
	Wall Finish:	Painted Gypsum Board
	Acoustics:	N/A
	Natural Lighting:	N/A
	Light Control:	N/A
	Ecug"qtm<	Dcug"cpf"wr rgt"ecdkpgvu"hqt"uvqtc i g="Ockndqzgu"*%VDF+"
	Accessories:	N/A
	Jctf yctg<	Per Design and Construction Standards
<b>TECHNOLOGY</b>	Audio/Visual:	N/A
	Pgyvqtm<	Yktgnguu="Fcv"rqtvu"ujqyp"kp"fk i tc o "ctg" o lpk o w o "tgswktgf=" Refer to Technology Guidelines for additional information
	Communications:	VOIP Phone / Data
<b>MECHANICAL, ELECTRICAL &amp; PLUMBING</b>	Ventilation:	Heating and cooling
	CtvkLekci"Nki jvkpi<	Overhead Lighting per Design and Construction Standards
	Electrical:	O lpk o w o "*3"Rqygt"qwwngv"cv"gcej" ycm"
	Plumbing:	N/A
<b>EQUIPMENT &amp; FURNISHINGS</b>	See room diagram	

